

Statement from Courtney Greatorex - Resident Liaison Officer at Bedford and Leicester Courts - Moor Lane & Cregg Lane, Preston

We are pleased to inform you that Starfish Construction has been appointed by **Miller Homes** to carry out the works at **Bedford and Leicester Courts**. Please find below the latest updates regarding the **cladding Remediation works and onsite activities at Leicester Courts**, commenced from **Monday 17th November 2025**:



Leicester Court

The team is working well within the programme, with progress continuing across multiple elevations in line with the agreed schedule. The latest updates are as follows:

- **Elevation B** • Tower 1: Cladding removed • Towers 3 & 4: Y-wall installation in progress
- **Elevation C** • Tower 3: Cladding and framing removed
- **Elevation D** • Towers 3 & 4: Cladding removed

All activities remain on track, and the project continues to progress in accordance with the programme.

Scaffolding

- Scaffold adaptations planned for mid next week.

Gas Checks

Continue gas safety testing programme across remaining properties (pending Gas Engineer availability). By close of business today, the initial round of gas safety tests will have been completed on the following properties: **33, 34, 35, 36, 21, 24, 27 and 30 Leicester Court**.

Intermediate tests have also been completed on the following properties: **33, 34, 35, 36, 21, 24, 27 and 30 Leicester Court**.

We sincerely thank all leaseholders and residents for their cooperation in facilitating access to the properties.



Dear Residents and Leaseholders,

As part of the ongoing works, in line with safety procedures, all boilers located within the cladding zone must be inspected both before and after the cladding works are carried out.

I will be conducting door knocking on **Tuesday 18th November 2025** to arrange access for upcoming gas safety checks

To carry out the boiler checks, our Site Manager, Daniel Horwood, along with the gas safety engineer, will be visiting properties.

If you are available on either of those days and would prefer to schedule a specific time for access, please get in touch with myself Courtney Greatorex your Resident liaison officer, it would be greatly appreciated.

To book an appointment, please contact me by phone, text, or email:

Courtney Greatorex

Resident Liaison Officer

Email Address: cgreatorex@starfishltd.com

Telephone : 07939 894015

 News & Updates



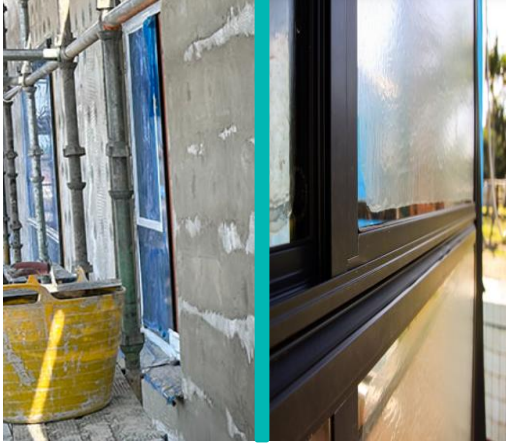
Our Welfare unit is located on the front entrance to the car park area between Bedford and Leicester Court

 News & Updates

Due to the cut-through patch currently being closed, please follow the directions shown on the diagram to access the main road,



News & Updates

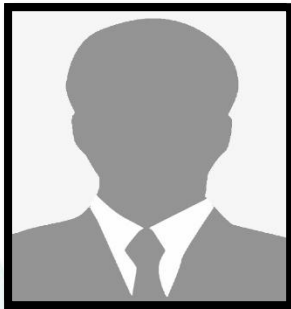


- To protect your privacy during the cladding works at your elevation, we will be applying a temporary frosted window covering to your windows while work is taking place. These coverings will still allow sunlight to come through, This will ensure that you are not overlooked by operatives working on the scaffolding. The coverings are removable and will be taken down once works in your area are complete.

We will continue to keep you updated each week as the project progresses.

Should you have any questions about the works, please do not hesitate to contact me directly.

Contact information



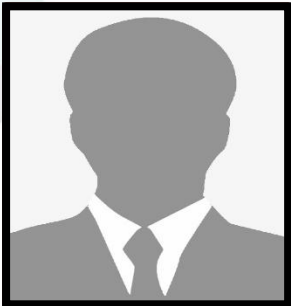
Resident Liaison Officer

Name: Courtney Greatorex

Telephone: 07939 894015

Email: CGreatorex@starfishltd.com

Working hours: 8am-5:00pm



Site Manager

Name: Daniel Horwood

Telephone: 07940 022295

Email: dhorwood@starfishltd.com

Working hours: 8am-5:00pm

We look forward to meeting you and working together to ensure a smooth and positive experience throughout the duration of the project. If you have any questions in advance, please feel free to contact Courtney Greatorex, your Resident Liaison Officer.